



RESIDENTIAL BROKERAGE
NewEnglandMoves.com

COLDWELL BANKER RESIDENTIAL BROKERAGE

137 NEWBURY STREET, BOSTON, MA 02116

617 266-4430

56 PIEDMONT Street South End



A Rare Find! Nestled between Back Bay and South End. This stunning and meticulously restored single family features 3 bedrooms, 2.5 baths plus a family room and has an expansive four level floor plan offering modern luxuries and fine details. The best of city living all within minutes to the Public Garden, Newbury Street shopping and Theatre District.

Offered at
\$1,287,000





RESIDENTIAL BROKERAGE
NewEnglandMoves.com

COLDWELL BANKER RESIDENTIAL BROKERAGE

137 NEWBURY STREET, BOSTON, MA 02116

617 266-4430

56
PIEDMONT Street
South End

Features

First Floor:

- ✧ State of the art chefs kitchen with custom cherry cabinets, granite counters, stainless appliances.
- ✧ The open living / dining room boasts soaring two story ceilings with a wall of windows.
- ✧ Gas fireplace and maple floors.

Lower Level:

- ✧ Extra large open room perfect as a third bedroom or family room, and laundry closet.

Second floor

- ✧ Two good size rooms and a full bath with marble and granite.

Third floor:

- ✧ Sun-splashed two room master bedroom suite with dressing / sitting area and a private bath.
- ✧ Roof deck- Direct access to your private outdoor oasis with impressive city views.

Additional amenities:

- ✧ Central A/C.
- ✧ Surround sound on all 3 levels.
- ✧ Excellent closets and storage space.
- ✧ Recessed and pendant lighting
- ✧ 3 Car parking at your door step

Quick Facts

Bedrooms: 3

Bathrooms: 2.5

Living Area: 2,042± sf

Taxes: \$9,467 (excluding residential exemption)

Offered at
\$1,287,000

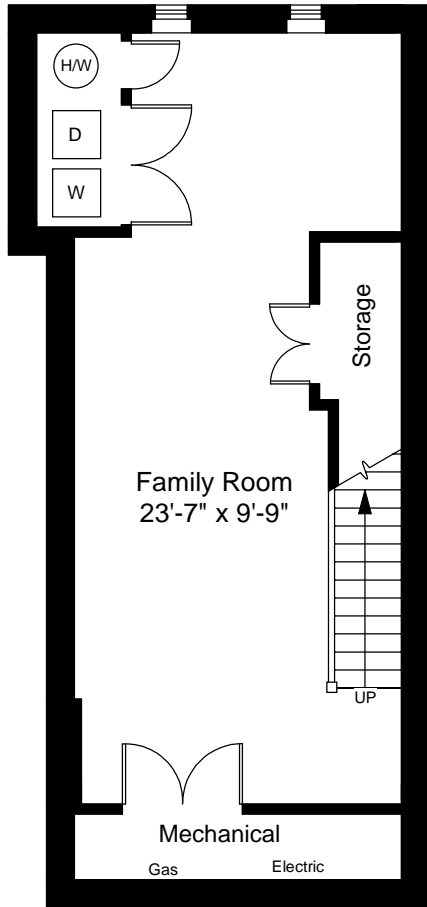


EXCLUSIVE LISTING BROKER:

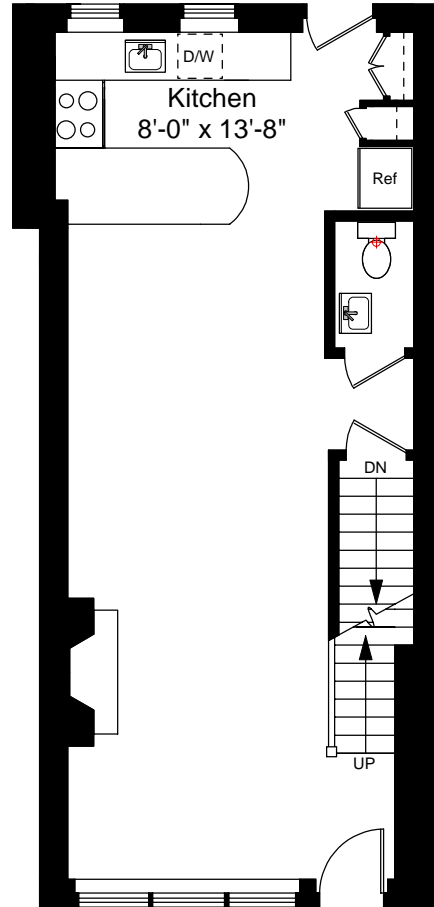


ROBERTA ORLANDINO,
Vice President
617.312.1511 Direct
Roberta.Orlandino@NEMoves.com
www.RobertaOrlandino.com





Lower Level Floor Plan
Ceiling Height = 7'-1"



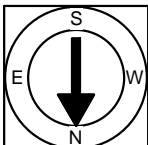
First Floor Plan
Ceiling Height = 12'-6"

56 Piedmont Street
Boston, MA 02116



Scale 1/8" = 1'-0"

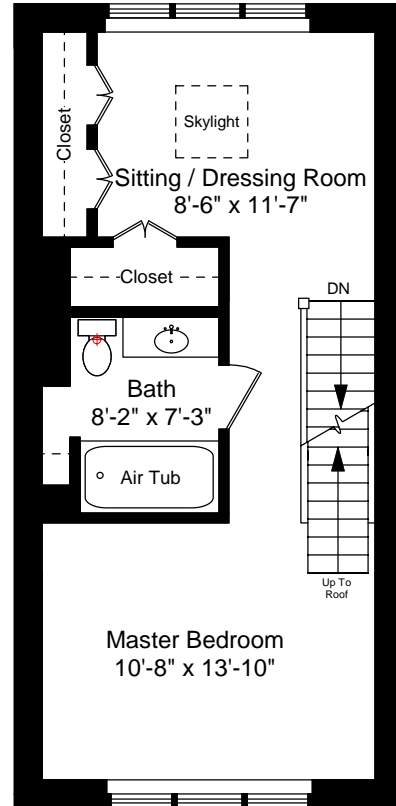
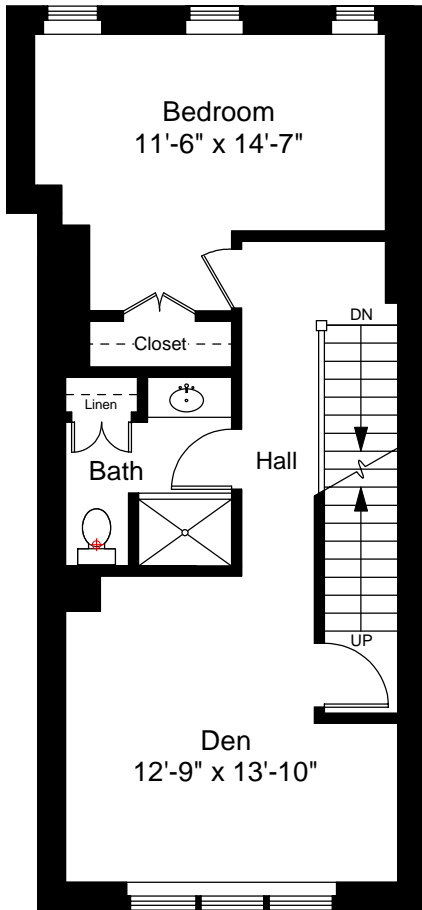
1



Completed: August, 2007

Note: Dimensions are not guaranteed and are provided for informational purposes only.

NEW ENGLAND
— FLOOR PLANS —
(617) 872-3336

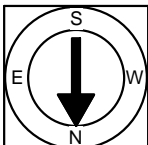


56 Piedmont Street
Boston, MA 02116



Scale 1/8" = 1'-0"

2



Completed: August, 2007

Note: Dimensions are not guaranteed and are provided for informational purposes only.

NEW ENGLAND
FLOOR PLANS
(617) 872-3336